

NINE dot ARTS

# Contents

Project Overview

Art Goals and Criteria

Mood Board

Artwork Typologies

Artwork Locations

Budget

Schedule

Next Steps

# Mercy Housing + Homeless Prenatal Program

## Project overview

---

The Homeless Prenatal Program (HPP) Community Campus expansion is primarily an 8-story mixed-use building and its connection points built adjacent to HPP's current building at the corner of 18th Street and Potrero Avenue. The campus expansion will include supportive housing, office space, and supportive services all in a single project at 2530 18th street. You can find more information about the project on the website: [www.2530-18th.org](http://www.2530-18th.org)

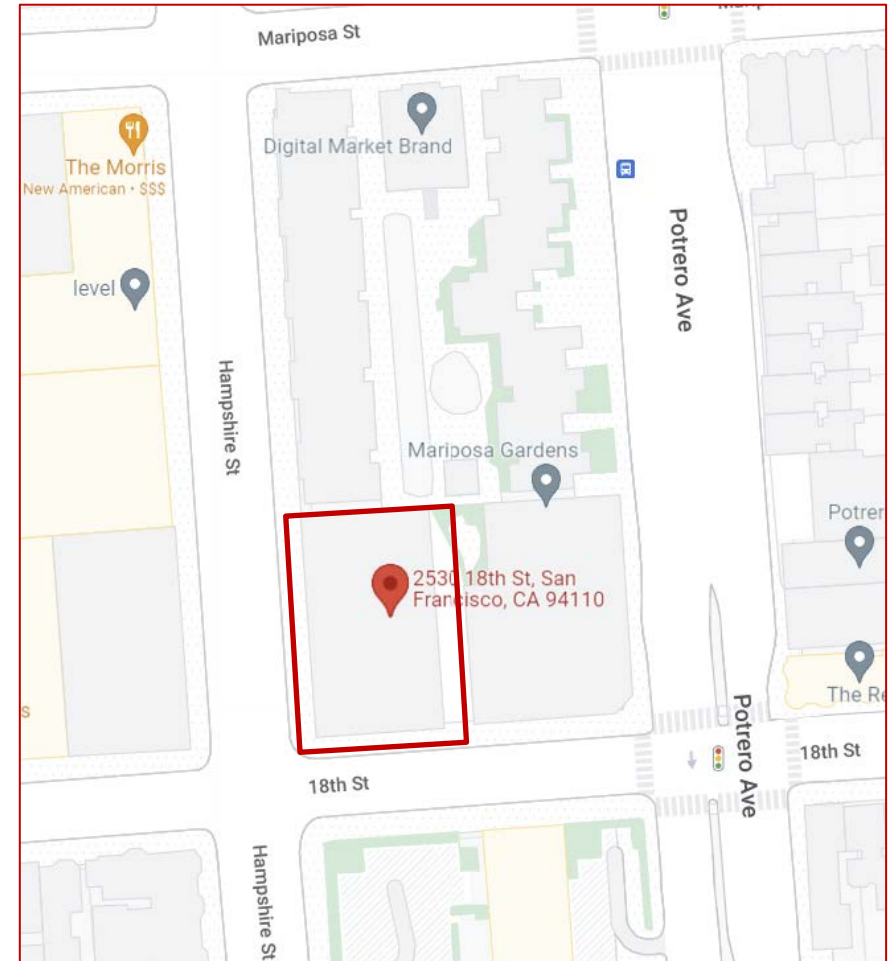
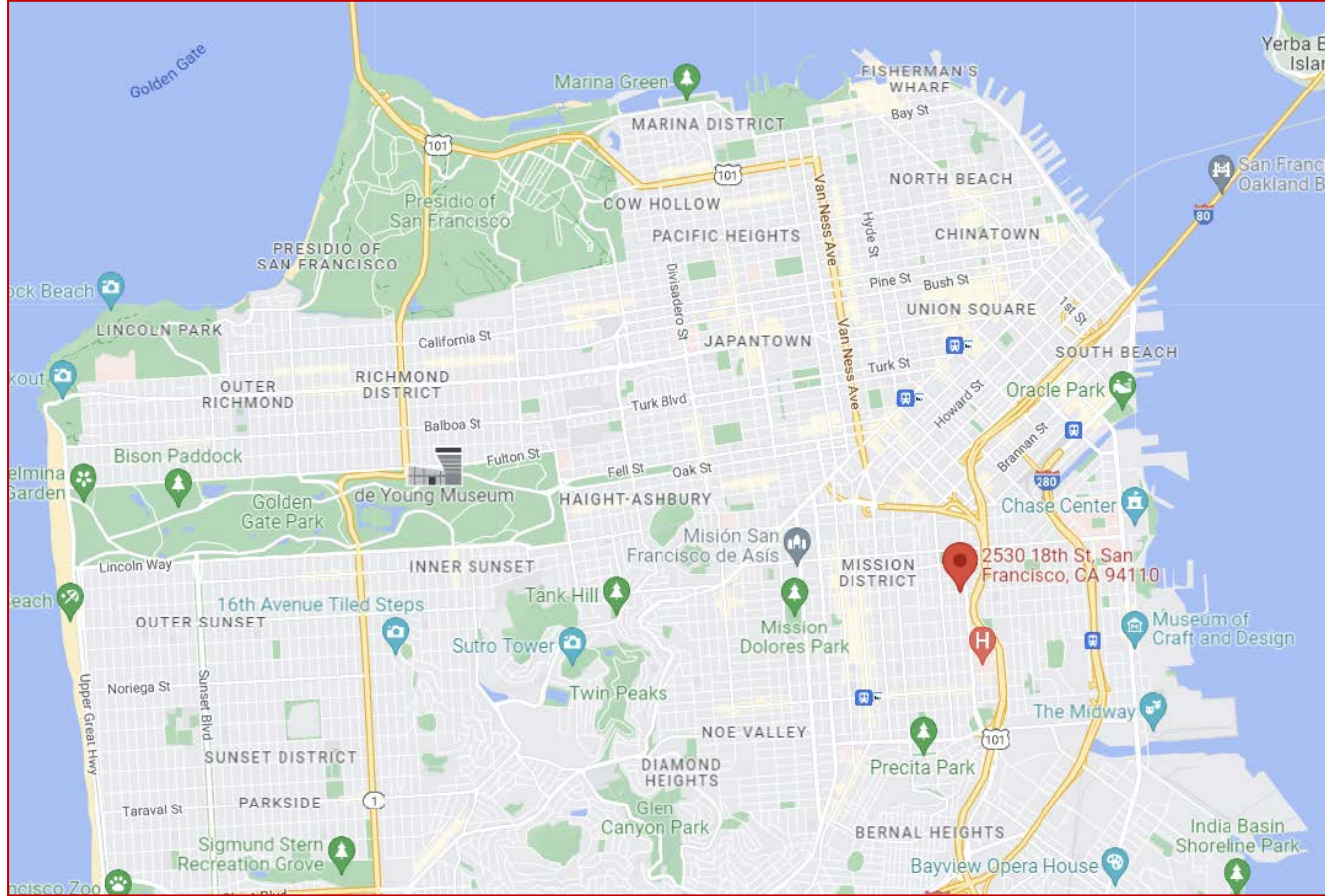
The project will enable the Homeless Prenatal Program to expand the critical services they provide to families in the city; creating a campus community of care that will support the health and growth of the countless families and children who make up the community they touch through their work.

Mercy Housing will support HPP in their campus expansion plan. More specifically, Mercy Housing will take the lead on the financing and development of the residential portion of the project, as well as coordinate with HPP and their consultants on the expanded office and services space.

NINE dot ARTS is the art curation and consulting firm overseeing the public artwork portion of the campus expansion.

All communication flow should remain between artist & NINE dot ARTS.  
Please do not contact the client directly.  
Thanks!

# LOCATION: 2530 18<sup>TH</sup> STREET, SAN FRANCISCO, CA





**LOCATION: 2530 18<sup>TH</sup> STREET, SAN FRANCISCO, CA**



Site where new campus will be built

Existing HPP offices

# ART GOALS



# SELECTION CRITERIA

The artwork for the new Mercy Housing and Homeless Prenatal Program partnership will reflect the power of community and home. The artwork will work to empower the visitors, residents, and staff. It will bring hope, comfort, and connection to the internal and external community.

The artwork will integrate with and compliment the thoughtful design. It will support the architectural story of embrace and comfort.

The artwork will be selected using an open call for entry RFQ to both local\* bay area and national artists. Community based artwork will be encouraged. Once artists are selected, site specific designs will be provided to select from. The artists will refine their proposals based on feedback and then be presented to the City of San Francisco for final approval.

**Beauty**

**Integrated**

**Welcoming**

**Uplifting**

**Inspired/inspiring**

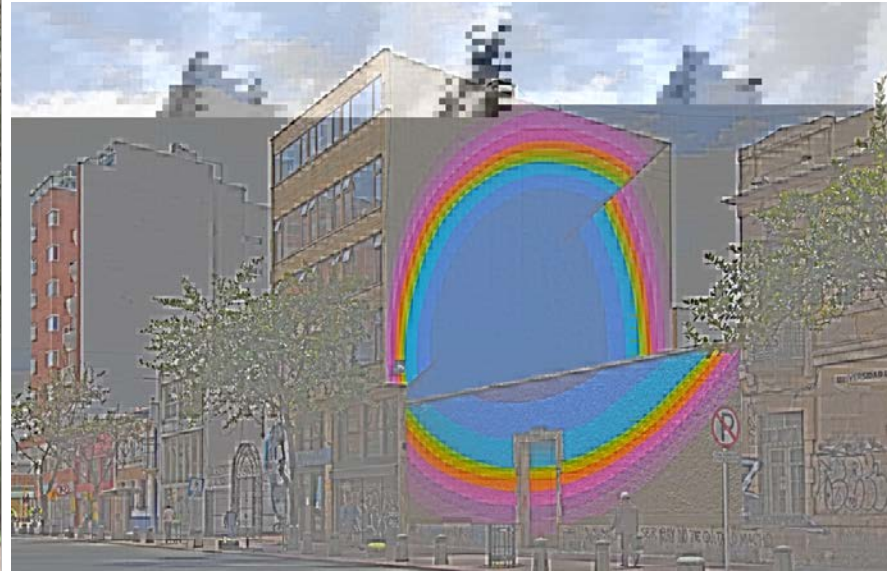
**Sense of pride**

**Equity**

**Culturally appropriate for neighborhood**



# Mood Board\*



# ART TYPOLOGIES



## ICONIC

Iconic artwork is defined as being large scale (greater than 6'H) and clearly reflective of the characteristics of the project. Iconic artwork is best suited to well trafficked spaces indicating an arrival, or points in the journey inviting reflection and pause.



## MURAL

Mural artwork is defined as artwork directly painted or applied to a wall surface or other substrate. Mural artwork should be used on buildings (non-historical), bridges, and gathering places, including the ground plane.



## AERIAL

Aerial artwork is defined as artwork experienced overhead. Aerial artwork should be incorporated in areas with high ceilings to draw visual interest. Aerial works can also connect pathways, taking on canopy-like forms providing both artful and functional (i.e. shade) uses.



# ART TYPOLOGIES



## ICONIC

Iconic artwork is defined as being large scale (greater than 6'H) and clearly reflective of the characteristics of the project. Iconic artwork is best suited to well trafficked spaces indicating an arrival, or points in the journey inviting reflection and pause.

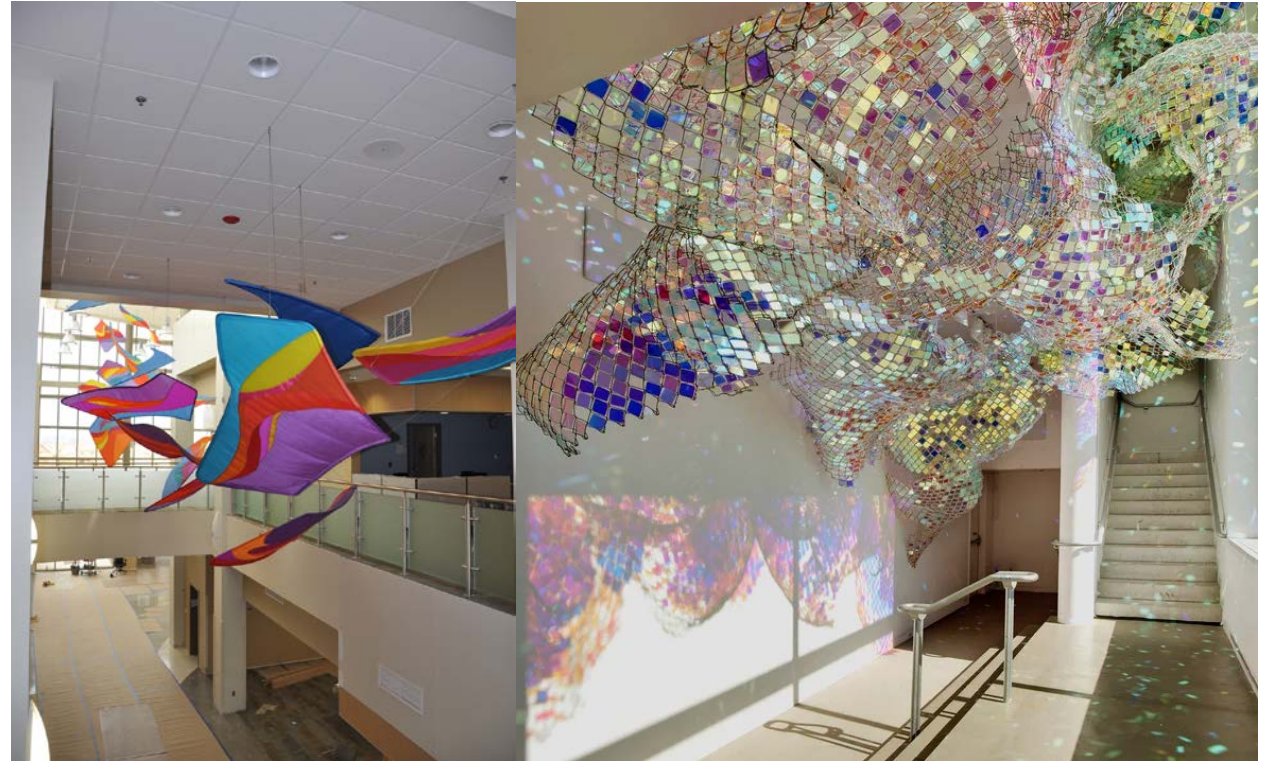


# ART TYPOLOGIES



## AERIAL

Aerial artwork is defined as artwork experienced overhead. Aerial artwork should be incorporated in areas with high ceilings to draw visual interest. Aerial works can also connect pathways, taking on canopy-like forms providing both artful and functional (i.e. shade) uses.





# ART TYPOLOGIES



## MURAL

Mural artwork is defined as artwork directly painted or applied to a wall surface or other substrate. Mural artwork should be used on buildings (non-historical), bridges, and gathering places, including the ground plane.







Location 3  
(ON NORTH  
WALL)



Location 1  
(INSET  
BETWEEN  
COLUMNS)



Location 4  
(ON EAST WALL  
AND UTILITY  
SHED)



## Corner of Hampshire and 18<sup>th</sup> Street



Location 2  
(INSIDE  
STAIRWELL)



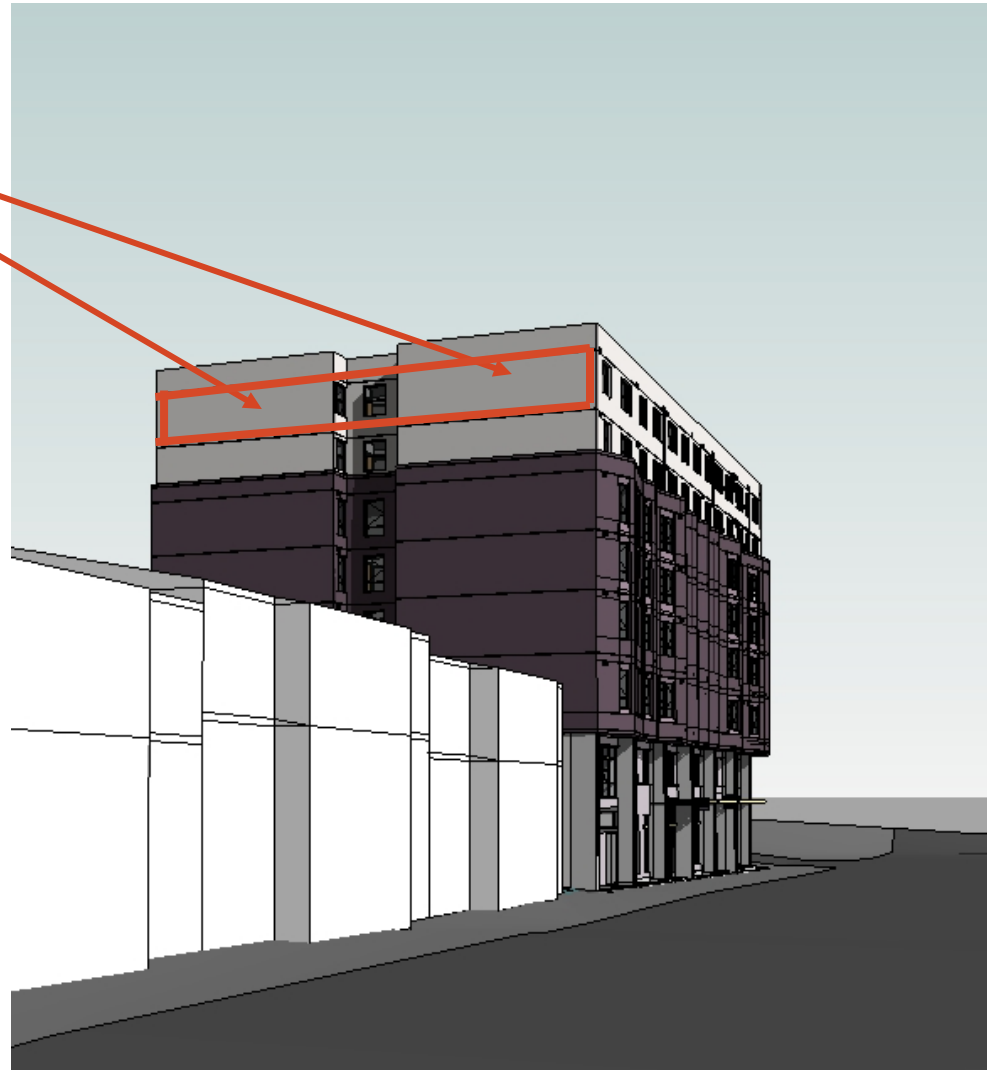
Location 2  
(INSIDE STAIRWELL)



Location 4  
(ON EAST WALL  
AND UTILITY SHED)



Location 3

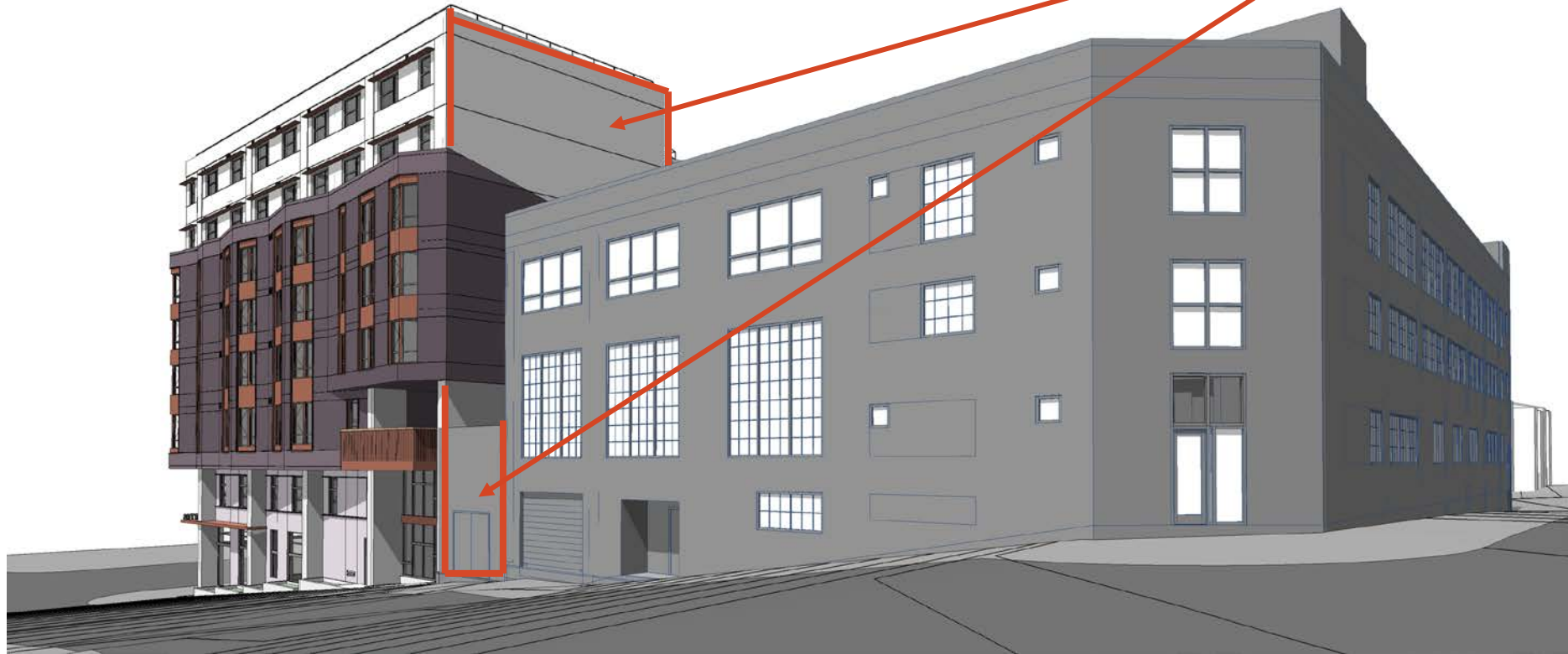


**North Wall**





Location 4  
(ON EAST WALL AND UTILITY SHED)



**East Wall from 18<sup>th</sup> and Potrero Ave**

# BUDGET X LOCATION

Location Description	Art Type	Art and Framing per piece	QTY	Total Art + Framing Price
1 - Art Installation at Entry	Sculpture/Installation	\$ 18,000.00	1	\$ 18,000.00
2 - Art Installation at Stairwell	Hanging Installation	\$ 22,609.88	1	\$ 22,609.88
3 - Wall Art at North Facade (10x33)	Mural	\$ 11,500.00	2	\$ 23,000.00
4 - Wall Art at East Facade (14x33)	Mural	\$ 25,510.00	1	\$ 25,510.00

# Schedule

Stage 2	Research + Curate	Estimated Date
	NINE dot ARTS create and post RFQs	10/03/22
	Review artist portfolios and select finalists	10/17/22
	NINE dot ARTS release RFP and design fees to finalists	10/31/22
	Review artist proposals and select winners	11/30/22
	Submit art plan to city for review	12/5/22
Stage 3	Art Acquisition	Estimated Date
	Work with artist(s) to finalize proposals with input from architects, structural engineers, fabricators and City departments.	Jan - March 2023
	Facilitate execution of contract(s) with artist(s) and Client including budget, insurance and preliminary timeline.	March 2023
	Oversee payments, progress reports, and creation of artwork	March 2023 – October 2025
Stage 4	Install + Engage	Estimated Date
	Ensure site is ready to receive artwork and coordinate with GC	October 2025
	Installations of murals and exterior art	November 2025
	Installation of hanging art	December 2025



# NEXT STEPS

**Interested? Here's what to do next.**

---

## Next Steps

Confirm interest and ability to work with the project vision, budget, and schedule along with which location you are interested in via email to Molly Casey (molly@ninedotarts.com) no later than **Friday 10/14/22**

Please feel free to share any portfolio images (JPEGs or PDF) you feel are relevant to the project, or an expression of your practice.

**Thank you!**

**Molly Casey**

Chief Curator + Co-Founder

NINE dot ARTS

THANK YOU

NINE dot ARTS